

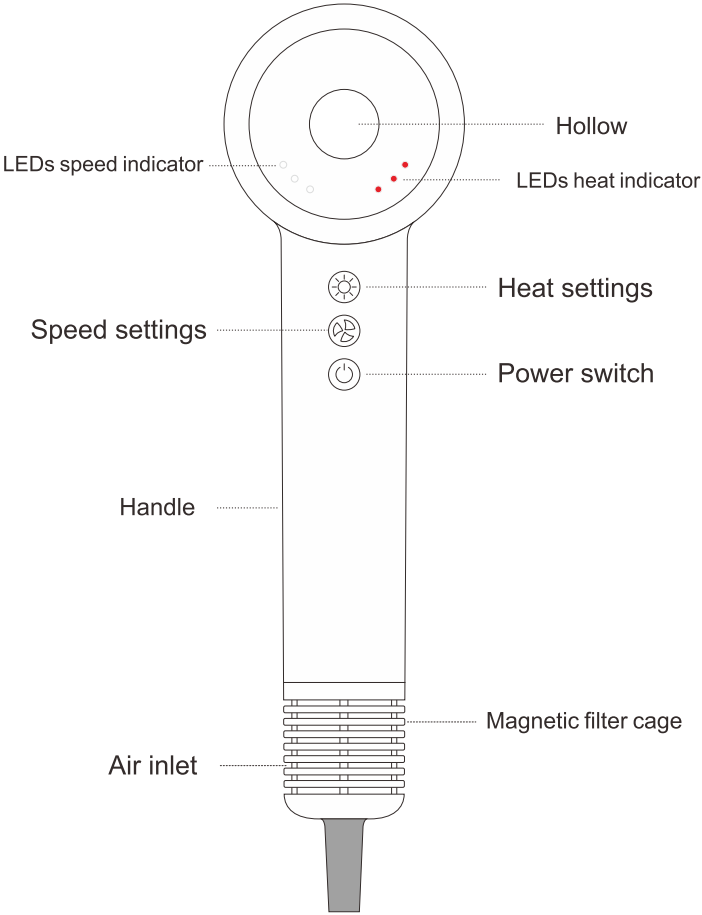
LANSAM[®] **PRO**

HIGH-SPEED HAIR DRYER INSTRUCTION MANUAL



Design Patent: ZL202030614493.4

STRUCTURE



KEY CONTROL

Heat settings

1. Short press to change the air temperature:
 - 1st gear for cool (No red light).
 - 2nd gear for regular 57°C (1 red light).
 - 3rd gear for warm 75°C (2 red lights).
 - 4th gear for hot 95°C (3 red lights).
 - **5th gear** for pro 115°C (3 red lights flashing):
Short press and then long press for 1.5s to enter this mode.
2. **Cool air mode:** Press and hold to enter cool air mode until you release it.

Speed settings

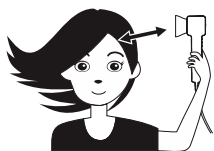
1. Short press to change the air speed:
 - 1st gear for low (1 white light).
 - 2nd gear for medium (2 white lights).
 - 3rd gear for high (3 white lights).
 - **4th gear** for gentle (3 white lights flashing):
Short press and then long press for 1.5s to enter it.
2. **Hot-cold cycle mode:** Long press for 2s to enter it, Hot air and cool air alternates every 5s (Red light on in hot air, red light off in cool air). Then short press and long press for 2s to exit it.
3. **Self cleaning mode:** In shutdown state, long press for 5s to start it. After cleaning for 10s, it will automatically turn off.

Power switch

- Short press to turn on or off.
- When turn on, it remains in the previous setting.

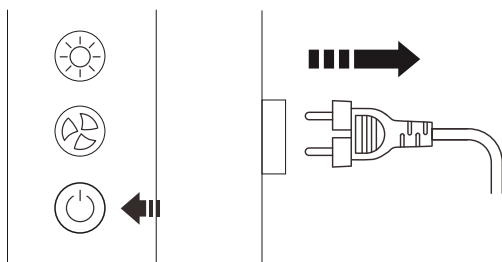
INSTRUCTIONS FOR USE

- Plug the appliance into a suitable mains socket.
- Towel dry and detangle the hair.
- Select the required heat/speed setting.
- There are 5 heat / 4 speed settings to choose from.
Use the high heat/speed setting for initial drying.
Use the low heat/speed setting as hair begins to dry, for styling or drying curly hair.
- Use the cool shot button on warm hair to rapidly cool the hair and set the style in place for a longer-lasting effect.



Distance from the air
outlet 3cm above

- Please only attach and remove nozzles when the hair dryer is switched off. Do not touch the air outlet and nozzles during use to avoid burns.
- After use, switch off and unplug the appliance.
Place the hair dryer on a heat-resistant surface until it cools down. Only then remove the nozzles.



FEATURES

① LANSAM Brushless Motor V12

The small, powerful motor spins at up to 120,000 RPM. And double bearing balance technology can improve the motor useful life. Strong airflow, fast drying.

② Intelligent Heat Control System

Measures air temperature 100 times/s and regulates the heat, to prevent your hair from extreme heat damage.

③ Hollow Design

It just looks super cool and has stronger airflow. With the motor positioned in the handle, the hair dryer rests comfortably in the hand, with a balanced centre of gravity for all-day use.

④ Negative Ions Hair Care Technology

Built-in negative ion generator, through high-speed airflow produces 500 million negative ions, neutralizes the static on the hair surface, making the hair smooth and not frizzy.

⑤ Hot-Cold Cycle Mode

Alternating hot and cold air can reduce heat accumulation, avoid overheating damage, dry quickly without sweating, help shrink hair scales, and make hair shiny.

⑥ Self Cleaning Mode

Use the convenient self cleaning mode to extract all the dirt, dust and particles from your dryer in minutes.

ACCESSORIES

Smooth Nozzle

Dries hair with smooth, controlled airflow, helping to create a smooth, natural finish.



Concentrator

Styles your hair one section at a time with precise, controlled airflow.



Diffuser

Disperses the airflow, Helps to reduce frizz and define natural curls and waves.



Professional Styling Nozzle



Anti-flying Nozzle



Essence Nozzle



Straightener Nozzle



Curling Nozzle



Front Spiky Nozzle

- The removable magnetic nozzles can be quickly and easily attached to the front of the product. The nozzle can be rotated 360° to obtain a more precise position for better styling your hair.
- Some accessories may not be included. You can purchase additional accessories by need.

SAFETY PRECAUTIONS

To avoid accidental injuries such as electric shock and fire caused by improper use, please read the instruction manual carefully before use and keep it properly for future reference.

- This product should not be used by persons with physical, sensory or intellectual disabilities and persons without relevant experience and knowledge (including children), unless they are supervised or guided by a guardian to ensure that they can use the product safely.
- If the supply cord is damaged, you must have it replaced by the manufacturer, its service centre or similarly qualified persons in order to avoid a hazard.
- Do not immerse the hair dryer body containing electrical parts in water or other liquids to clean it. If the hair dryer falls into water, please unplug it immediately and do not continue to use it even after it is dry.
- When using a hair dryer in the bathroom, unplug it after use. Even if the hair dryer is turned off, it is still dangerous to be near water.
- For added protection, it is recommended to install a residual current device (RCD) with a rated residual working current not exceeding 30mA in the electrical circuit of the bathroom power supply. Consult the RCD installer, which needs to be purchased separately.
- This product is equipped with a non-self-resetting thermal safety cut-out to prevent overheating. If the product cuts out due to overheating, unplug it from the power outlet and allow it to cool.
- Note: To avoid a hazard due to false resetting of the thermal protector, the appliance must not be powered by an external switching device, such as a timer, or connected to a circuit which is switched on and off by a common component at regular intervals.

SAFETY PRECAUTIONS

- Do not block the air inlet and outlet with towel, clothing, etc. to avoid danger.
- Do not touch the hot surfaces such as the air outlet during use or just after shutting down to avoid burns.
- Do not touch the plug or any part of the product with wet hands to avoid electric shock.
- Do not place the appliance on any surface while its operating.
- Unplug the hair dryer when it is not in use and before performing maintenance or repair on it.
- When storing the hair dryer, do not twist or knot the power cord to avoid damaging the cord.
- Do not place the power cord near heat sources or in locations where its protection capabilities may be impaired.
- Do not use the hair dryer where aerosol (spray) products are being used or where flammable sources are present.
- Do not use the hair dryer for purposes other than drying hair, such as drying clothes or other items.
- The use of attachments that are not supplied by the manufacturer may cause fire, electric shock or injury and damage to the appliance.
- Do not use this product if any parts become damaged.
- Please use the hair dryer according to the rated power supply. Do not use a universal plug or other voltage converters to avoid danger.
- If the hair dryer is abnormal or malfunctions, please contact the manufacturer for repair and do not disassemble it yourself.



This symbol on the device means:
Do not use this product near a bathtub, shower, wash basin, or other container filled with water.

TROUBLESHOOTING

Problem	Diagnostics	Solutions
Smoke comes out of the hair during use.	You have put products on your hair (for example, mousse, spray or gel).	Never put any product in your hair that is not suitable for high temperature
The hair dryer does not switch on.	The wall socket does not works properly.	Check wire and plug
	The plug is not fitted correctly into socket.	
	The supply cord may be damaged.	
There is a spark or work slows down	The switch is not on the correct voltage. Too high or too low.	Check the electricity supply voltage
The lights at home flicker	Not enough power at home	Check the hair dryer rated power
Sudden power outage	Overheating protection programme is started.	Wait until the hair dryer has cooled down
No hot wind	Circuit board is damaged. Or internal component is damaged.	Return for repair
Lighting error		
Heater is red		
The noise becomes louder	Air inlet or outlet blocked.	Clean air inlet and outlet

If the hair dryer still does not work properly after the above treatment, please contact Customer Service Centre.

WARRANTY SERVICE

Return Policy

LANSAM offers 15 days unconditional return service. Within 15 days since the date of purchase, you can contact us to return your hair dryer and to be refunded.

To be eligible for a refund, you must:

- Return the hair dryer with all accessories and gifts.
- Return them in their original packaging.
- Provide valid proof of purchase.
- Ensure the hair dryer and accessories are resalable.

Returns shipping costs:

- Returns for reason of product quality issue, LANSAM will carry the shipping costs.
- Returns for any reason other than product quality issue, the buyer should carry the shipping costs.
- Returns for any reason other than product quality issue, buyers should assume responsibility for any damage or loss incurred in transport.

Warranty Policy

LANSAM provides 1-year guarantee for your hair dryer. In 1 years since the date of purchase, if the product cannot work due to the defects of materials or workmanship, we will repair or replace it for you.

Following situations are not covered:

- Purchase from unauthorized resellers.
- Warranty period is expired.
- Without proof of purchase.
- The product has been modified, altered or repaired unofficially.
- Use the hair dryer for any other purpose than drying hair.
- Damage caused by operations which are not in accordance with user manual.
- Damage caused by any misuse or accident.
- Damage caused by excessive usage considered as normal wear and tear.

WARRANTY CARD

Product Model _____

Purchase Date _____

Point of sale _____

User Name _____

Contact num _____

Postal Addr _____

Postal Code _____

Repair Record

	Description of the issue	Date of repair
1		
2		



PARAMETERS

Product Name: High-Speed Hair Dryer

Model: LS-6001

Rated Power: 1400W

Rated Voltage: 220V~

Rated Frequency: 50Hz

Product Size: 265x75x70mm

Manufacturer: Xiaotian Technology Co., Limited

Executive standard:

GB17625.1-2012 / GB4343.1-2018

GB4706.1-2005 / GB4706.15-2008



Made in China